



CathexisVision 2016.2 Operator's Manual

Contents

1	Introduction	2
2	Cameras Tab.....	3
a.	Main Screen Areas.....	4
b.	Cameras Panel Overlays and Context Menu	6
c.	Review Controls (Timeline and Review Controls Panel).....	9
d.	Panel Selector	12
3	Archiving.....	17
a.	Introduction.....	17
b.	Operation.....	17
4	Layouts and Sequences (Video Wall Menu).....	23
a.	Video Wall.....	23
5	Database Tab.....	27
a.	Database Tab	27
b.	Find an Entry.....	27
c.	Filter a Database to Locate Recordings (pre-2015, and Integration Databases).....	27
d.	Replay an Associated Recording.....	29
e.	Archive Selected Database Recordings	31
f.	Print an Image from a Video Replay	31
6	Monitors Tab	32
7	Audio procedures	35
8	Other procedures	36

Note: While Cathexis has made every effort to ensure the accuracy of this document, there is no guarantee of accuracy, neither explicit, nor implied. Specifications are subject to change without notice.

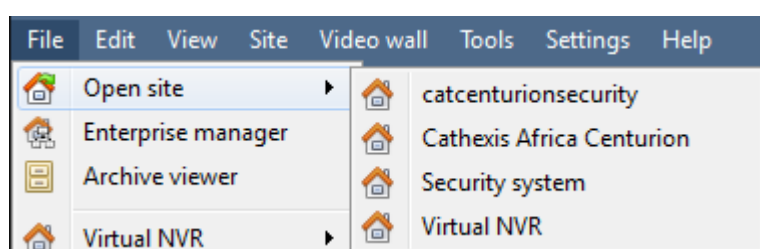
1 Introduction

This guide will detail the different operating procedures that the person in the control room may be expected to undertake, using the CathexisVision Client software. This does not include the setup's that take place, either in the setup tab, or via the menus. For this information please refer to the Setup Manual.

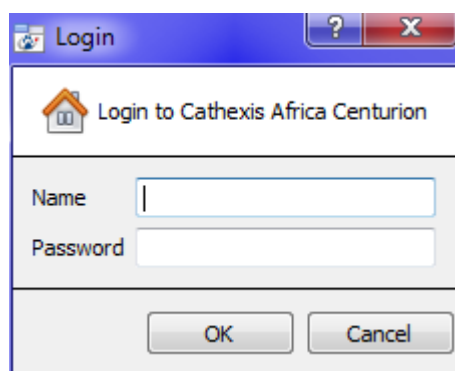
For example this manual will deal with questions such as “how do I zoom in a PTZ camera”, and “how do I review previously recorded footage?” The Setup Manual, on the other hand, will provide information on how one would add and setup a new camera, or add a motion detection algorithm to a camera.

Opening a Connection to a Site

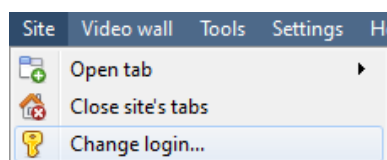
The CathexisVision Client is not tied to any particular site, and as such, the user first has to open a connection to the site they wish to view.



Clicking on **File** → **Open Site** will open a list of all sites that have been added to the Viewing PC. Select the site you wish to view.



After selecting your site, you should be prompted to enter in your login credentials.



If the default is to log in at a certain level, and you wish to login with your specific user click on **Site** → **Change login** and enter your credentials.

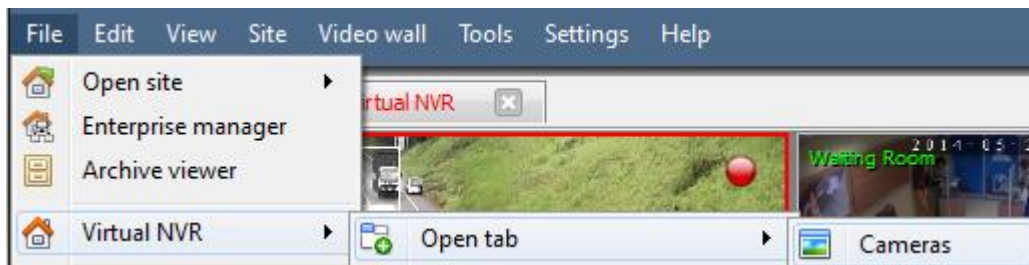
2 Cameras Tab

This section will deal with the Cameras Tab, which is the tab through which the operator will view live footage, as well as review recorded footage.

Open the Cameras Tab

After opening a connection to the desired site, as described above the operator must open the Camera Tab. There are three ways to do this:

Option 1



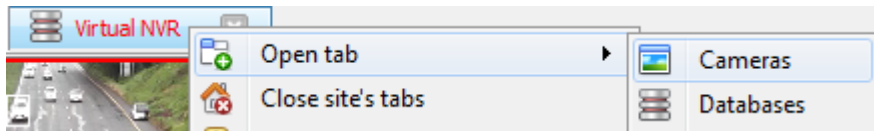
Click on **File** -> **Your_Site** -> **Open tab** -> **Cameras Tab**

Option 2



Click on **Site** -> **Open tab** -> **Cameras**

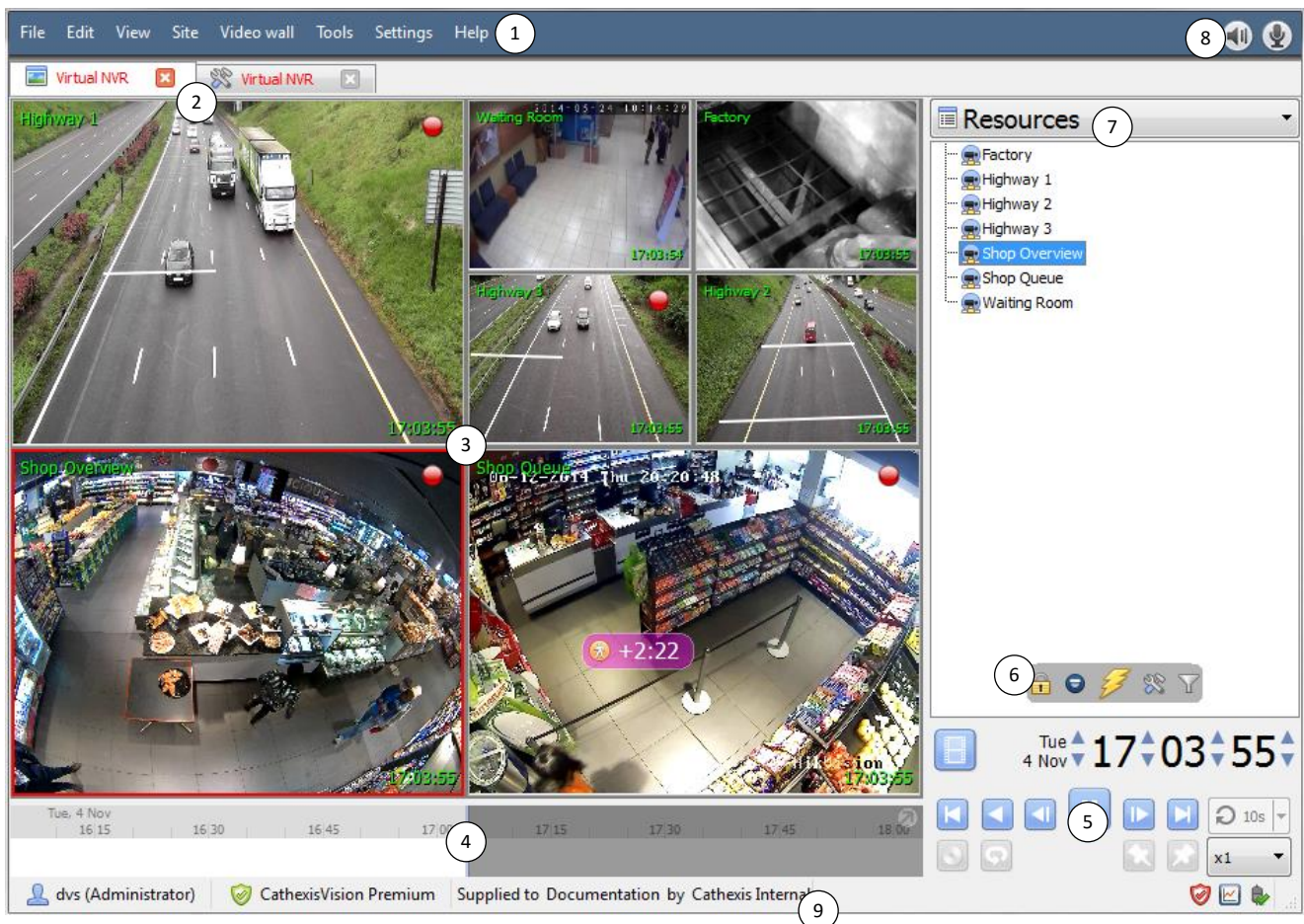
Option 3



This option will only a tab for site open in this tab. Right click on the site's open tab and click **Open tab**-> **Cameras**

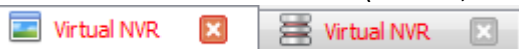
a. Main Screen Areas

The following presents a brief introduction to the various features of the Cameras Tab, which will each be dealt with in deeper detail, further on in the document.

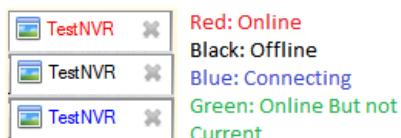



1 The **menu bar** provides menu options for the current desktop, and shows your access rights. These menu options change on a tab-by-tab basis.

2 These are the various tabs (camera, database, and setup) for one or multiple sites.



The colour of the text in the tab indicates its connection status:









Each Site can be custom-configured to automatically load certain tabs, when a connection is made to the Site (this is configured from **File → Enterprise Manager → Right Click Site → Properties**). To close a tab click on .

3 The **cameras panel** contains the individual panels on in which cameras are viewed. Selected cameras are outlined in red; unselected cameras have no outline.

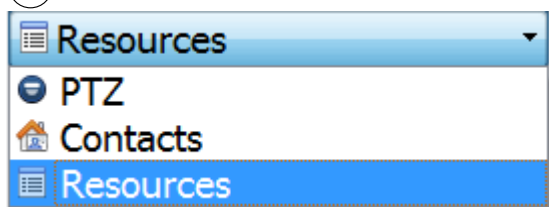
4 The **timeline** will show the current time of the selected panel/s. The white area indicates time that has passed; the grey area indicates time approaching; the point between them indicates the present time.

5 The **review controls panel** hold the tools used in reviewing, and archiving, recorded footage, for one or multiple cameras.

6 The resource panels mouse over options include a number of options:

	Lock display. Some CathexisVision events will be setup to switch the camera panel to view cameras related to the event. Clicking on this lock will enable/disable this feature. An unlocked display () will switch; a locked display won't.
	PTZ Controls. This will pull up a basic PTZ control menu. For a, potentially, more detailed menu see the note on Number 7 (below).
	Event Notifications.
	Configure Resource Panel.
	Resource Panel Filter.

7



The **panel selector** is a dropdown bar for selecting from a variety of panels:

- PTZ.
- Resources.
- Contacts.

8



The **Local Resources** bar (top right) shows the status of local hardware resources:



Local default audio input (e.g. your microphone)



Local default audio output (e.g. your speakers)












Local monitor

When active, these resources display **bright green**, and when inactive they are **grey**. If you run your cursor over an active resource, a “tooltip” will provide information on the activity. For example, mouse-over a green monitor to see what camera is displaying to that monitor. If you have many local resources, they will be arranged in a scrolling area, with left and right scroll arrows.

9

The status bar, at the bottom on the interface provides relevant information:

Notification Icon	Notification Description
 dvs (Administrator)	The username , and their access level.
 CathexisVision Premium	This represents the main license of the unit.
Supplied to Documentation by Cathexis Internal	The distributor of the license.
	The cameras notification will only appear to alert you when cameras are down. Clicking on it will allow you to see which cameras these are.
	The licensing notification will be permanently present, but will

	change colour depending on licencing status. Green indicates a healthy licensing status. Orange indicates that there are demo licenses that are due to expire. Red means either missing or expired licenses.
	The performance monitor notification is permanently present, and will allow you to view performance statistics. See the Appendix of this document for a full explanation.
	The connection status icon is permanently present, and indicates the status of the connection to the current site.
	Video Analytics notification. Warns the user when an error has occurred which involves one or more of the video feeds on a site.
	Failover notification will provide information about the status of existing failover servers.

b. Cameras Panel Overlays and Context Menu

This section will cover the different overlays that are visible on each panel, and the options available in the context menu.

Overlays


Live



Green text shows that the stream you are viewing is live.

The text in the top left (Highway 1 here) is the camera's given **name**.

The **timestamp** is seen on the bottom right.

A  present in the top right hand corner of the panel indicated that the camera is currently recording to one of the databases.

Review



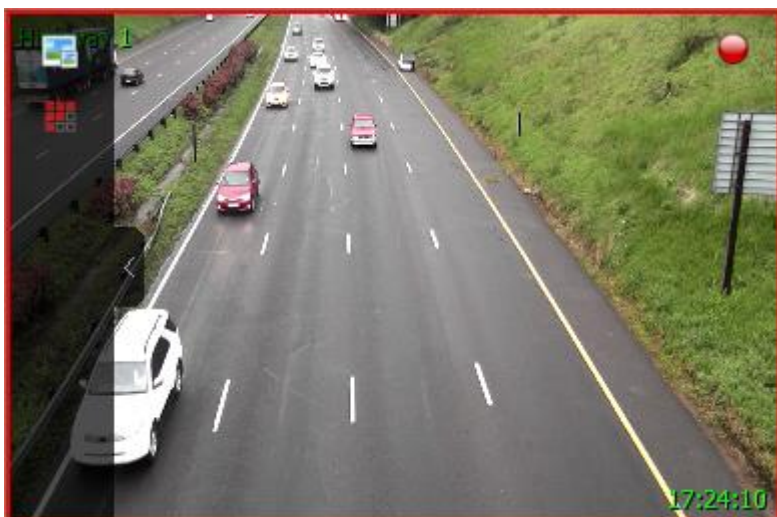
Red text indicates that the video in this panel is being reviewed, from previously recorded footage.


The text in the top left (Highway 1 here) is the camera's given **name**.

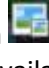
The **date**, and, **timestamp** is seen on the bottom right.


Mouseover Overlay

When you hover the mouse over a camera's panel you will see the little black- arrow icon appear on the left-middle of the panel. Clicking on this icon will expand the menu, as you see below:

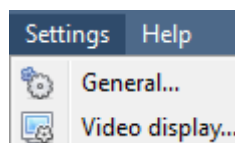


Click on  to allow you to change which algorithm information is overlaid (if there are algorithms set up).

Clicking on  will allow you to select between available video feeds for the selected camera. (This is very useful when you need to view a camera over a slower link, and the camera provides a lower format/resolution video feed.)

Note: When you are reviewing video you will also see the database icon  in the list. This will allow you to select which database you want to review video from. This is useful if this camera records to multiple databases.

Review Button Overlay

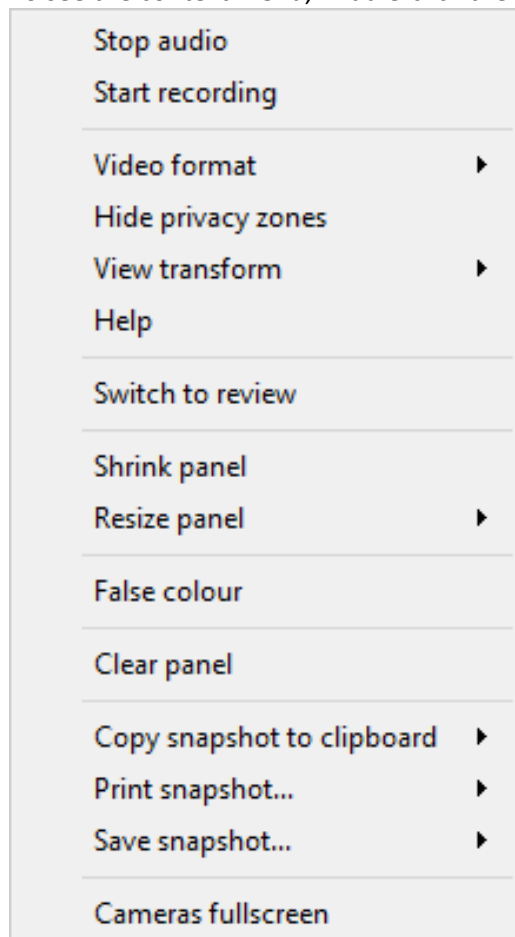


Under **Settings** → **Video Display** there is an option called ☒ **Show review button overlay**. When checked you will see the following overlay when you mouse-over a camera panel where the video is currently being reviewed:




Context Menu

To see the context menu, middle-click the mouse on the camera panel of your choice.



Start/Stop audio will start/stop a cameras audio feed streaming to the device.

Start/stop recording. If User Recording has been setup, this option will allow the user to manually trigger a recording. (An  icon will appear in the top right hand corner, when a User Recording is in progress.)

Video format will allow the user to select which of the cameras video streams (which format/resolution) they wish to view.

Hide/show privacy zones, will allow configured CathexisVision privacy zones to be shown/hidden in live and review feeds.

View transform allows you to transform images for cameras with special lenses. (E.g. 360 degree cameras.)

Overlays will allow you to view the different analytics algorithms that have been applied to this camera's feed, live in the Cameras Tab.

Help will pop-up a help window on Digital Zoom, and PTZ Control within this panel.

Switch to review/live will allow you to switch back and forth between live and review footage.

Copy snapshot to clipboard will allow you to copy the current still-image from a camera to your clipboard.

Print snapshot will print the snapshot that is currently on the clipboard.

Save snapshot will allow you to save the snapshot to disk.

Enlarge panel will enlarge the camera panel.

Maximise panel will enlarge the panel to fill the tab.

Shrink panel will reduce the size of the camera panel.

Resize panel gives you more resizing options.

False colour will change the colour of the image to false colour.

Clear panel removes the camera/s from the currently selected panel/s.

Cameras fullscreen will fill the entire screen with the Cameras Panel; creating a Video Wall. Pressing ESC, on the keyboard, will exit.

Select, or Move, Cameras

1. To **select a single camera** left-click on it.
2. To **select multiple cameras**, hold down CTRL while left-clicking on the cameras you wish to select
3. To **move a camera**, from one panel to another, right-click-and-hold the camera and drag it to the new panel.
4. CTRL-A will **select all cameras** in the Cameras Tab.

Digital Zoom

You can zoom in digitally on cameras that have no physical PTZ capability. This is done by selecting the specific camera in the Cameras Panel and doing the following:

- **Zoom in/out**

Scroll the mouse wheel.

- **Zoom to area**

While holding the shift key, drag-select an area using the left mouse button

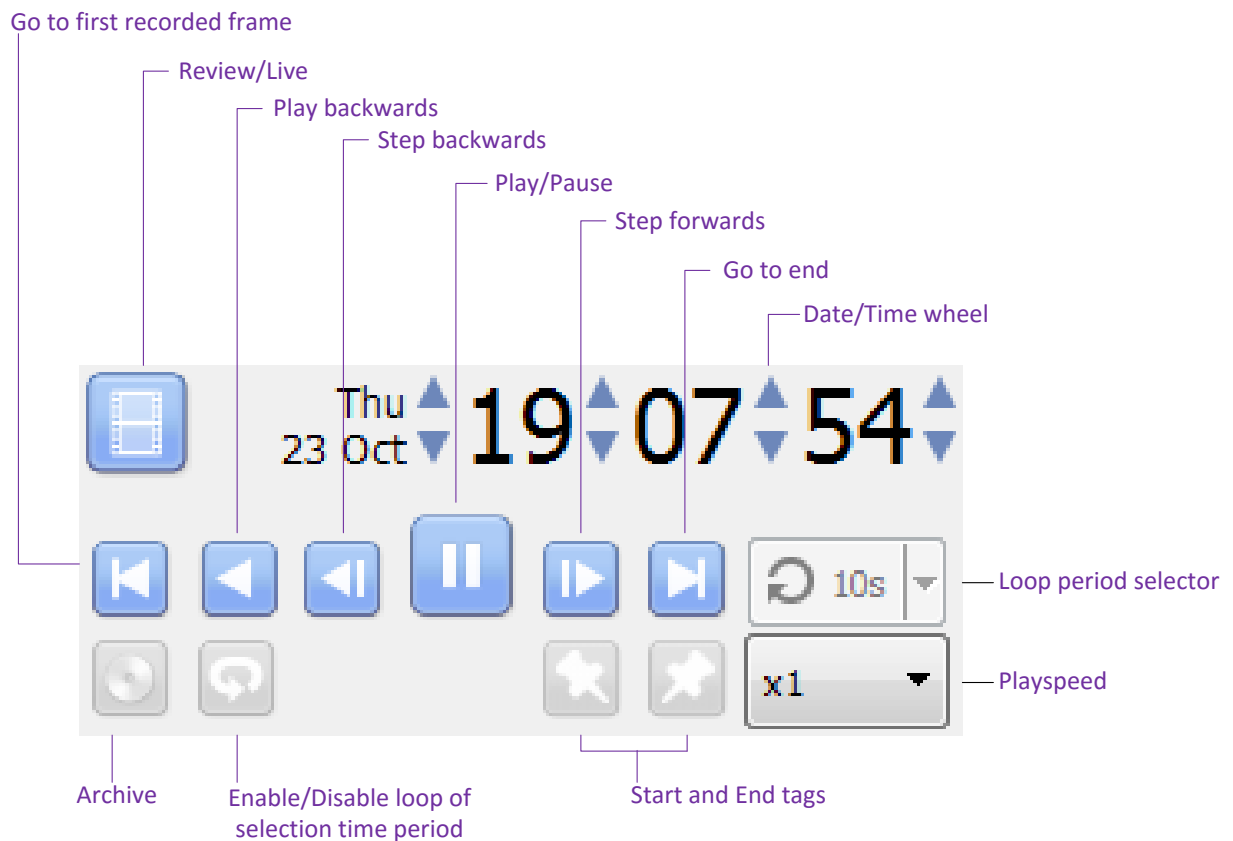
- **Pan**



Pan the image using the left mouse-button. This is done by holding down the left mouse button, while moving the mouse.

c. Review Controls (Timeline and Review Controls Panel)

This section will deal with reviewing video in CathexisVision. There are two sections that may be used to review recorded footage. The **Review Control Panel**, and the **Timeline**.

Review Control Panel



Note: When you click the  icon, to enable review, it will change to an  icon. Clicking the running-man icon will return you to live view.

- *To Review Footage from a Certain Date*

Using the Time/Date Wheel



To go to a specific date, select the camera/s that you wish to review, and click on the arrows of the Date/Time wheel until you have settled on the correct date/time.



Using the Timeline

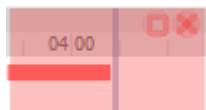
To move to a date and time, using the timeline simply left-click and hold anywhere on the timeline, and drag the timeline to the time/date you desire.

- *Selecting a Period for Review*

After finding something of interest, you may wish to loop through the recorded footage around that event. (This can also be useful when selecting footage for archive). You may move the timeline around by left-click-dragging it.

There are two ways to select the period which you want to review.

1. **Tagging:** Click on the  icon to tag the start of your selection. Then navigate to the end of your desired period, and click on the  icon, to tag the end of your selection.
2. **Shift-selection:** This is done by holding down the SHIFT key, while click-dragging your selection with the left mouse button. Your selection will look like the image below.



The selected areas will appear as you see to the left. By default it will be set to loop. This can be seen when looking at the loop icon.



Means that it will loop, to the beginning of the selection, as it gets to the end of the selection.



Means that the video will continue to play past the end of the selection.

Timeline

The timeline at the bottom of the GUI indicates where in time the currently selected cameras are.

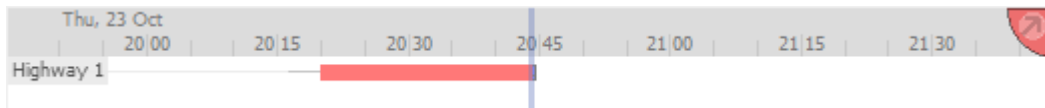
Note: while you may review legacy video in CathexisVision 2015 and onwards (recordings made on pre 2015 systems) the timeline will remain blank.

- **Live View Timeline**

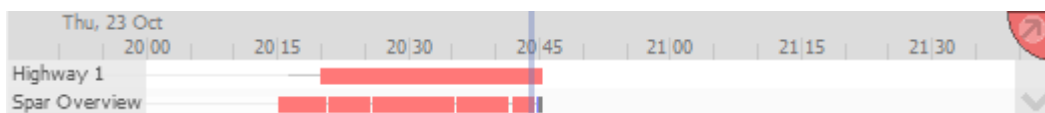


The live view timeline simply show the current time at the intersection between white and grey.


- **Single, and Multiple, Camera Review Timeline**



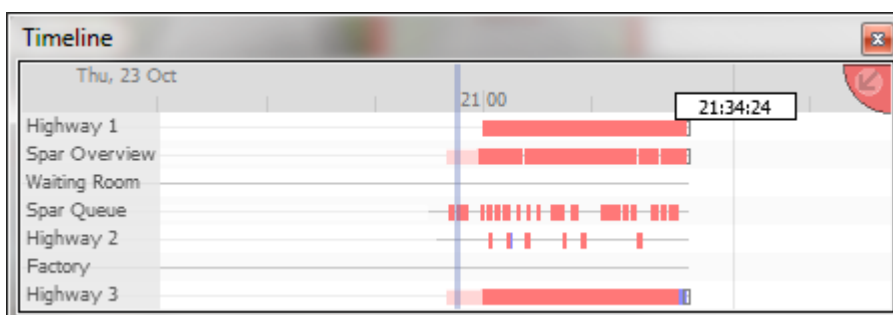
When reviewing a camera's recorded video you will see the timeline change to show red blocks. These blocks on the timeline represent recorded events.


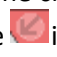


If you have selected multiple cameras to review they will appear stacked on the timeline.

Note: You may only view two cameras' timelines at once, on the docked . To cycle between them click on the  icon at the bottom right of the timeline. If you wish to see more you may detach the timeline from the GUI. This is described below.

- **Detached Review Timeline**

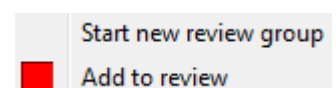


To detach the timeline from the GUI click on the  icon, at the top right of the timeline. To reattach the timeline click, in the same place, on the  icon.

- **Synchronised/Independent Review**

By default all reviews are synchronised, when you have selected multiple cameras for review. It is possible to review cameras independently.

When already reviewing a camera, if you middle click on a camera's panel you will see the following options in the context menu.



Start new review group will add this camera to a separate group of review cameras, which will be asynchronous to the original review group. The new review group is indicated by the tag on the top-right of the video. Each review group will get its own colour.

Add to review will add this camera to the already existing review group. As you add review groups the number of options here will increase as a result.

- ***Timeline Actions***

Zoom in on Timeline

There are two ways to zoom in on a section of the timeline.

1. By mousing over the timeline (during review) and rolling the mouse-wheel forwards. To zoom out roll it backwards.
2. But shift-selecting a section of the time line.



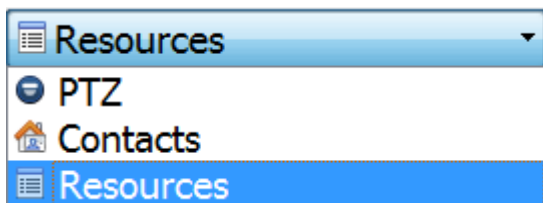
This is done by holding down the SHIFT key, while click-dragging your selection with the left mouse button. Your selection will look like the image to the left.

To **zoom in** on this selection click on the  icon.

Move the Timeline with the Mouse

You may move backwards and forwards in time, by left-click dragging the timeline in the direction that you want to travel.

d. Panel Selector

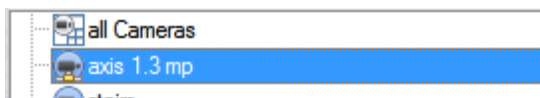


Clicking on the drop down menu of the Panel Selector will show you three options. The **PTZ Controls**, **Contacts**, and **Resources**. The Contacts are special site contacts, setup by your administrator. The Resources are the site resources, such as Cameras, Relays etc.

Select Cameras from the Resources Panel

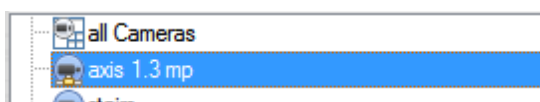
The resources panel will be the one from which you select which cameras you want to view in the Cameras Panel. There are a few ways to do this.

- ***Double-click a camera in the Resources panel***



Double-click a camera in the Resources panel to load it Live into the camera panel that currently has focus (is selected).

- ***Drag a camera from the Resources panel***



Left Click on a camera, holding down the mouse button, and Drag a camera from the Resources panel (first drag the camera horizontally left, and then to the panel that you want

to view it in)

- ***Drag a group of cameras from the Resources panel***



From release 5042c2, January 2011, you can select a group of cameras from the resource pane and drag them onto the camera display (for camera tab or multisite tab). This is a quick and convenient way to populate a screen with cameras.


This is achieved by selecting cameras while holding down the CTRL button on your keyboard, then Dragging them across.

Mouse Over Options


When you hover your mouse over the Resources Panel you will see the following option set appear:




- ***Lock Display*** 

Lock display. Some CathexisVision events will be setup to switch the camera panel to view cameras related to the event. Clicking on this lock will enable/disable this feature. An unlocked display () will switch; a locked display won't.

- ***PTZ Controls*** 

To bring up the PTZ panel, click on the  icon in the Mouse Hover Options, in the Resources Panel. (**Note:** Selecting the PTZ option from the Resource Panel dropdown menu will give you more PTZ options.)

With a Pan-Tilt-Zoom (PTZ) camera an operator can manipulate the camera's direction, zoom, focal distance and amount of light. A PTZ camera is indicated in the Resources panel with an  icon. He/she can also control pre-configured camera views called "Presets".



This panel provides controls for camera presets, and a software joystick for interactive control of the camera.





The Preset controls enable you to **set** Presets and **go to** Presets.

The curved grey buttons surrounding the joystick enable zooming in and out, focussing closer or further away, and iris control – lightening or darkening the camera image.

The **Manual** button is for manual override of the dome (to override automated patterns, local tours etc.). The **Auto** button relinquishes manual control, to let the system regain its automated configuration.

Note the green text on one of these buttons. This indicates which mode currently applies – **Manual** or **Auto**. In the example at left, the system can function automatically. The screen may change unexpectedly as it runs patterns, tours, etc.

PTZ Panel

To pan left / right from the PTZ panel  Drag joystick left / right	To tilt up / down from the PTZ panel  Drag joystick up / down
To move the camera faster from the PTZ panel  Distance determines speed - drag joystick out, in required direction	To move the camera slower from the PTZ panel  Distance determines speed - drag joystick closer in, in required direction
To zoom in / out from the PTZ panel Watch the live camera as you press the Zoom + and Zoom - button	To focus further / closer from the PTZ panel Watch the live camera as you press the Focus + and Focus - button

<p>To go to a preset from the PTZ panel</p> <p>Select the preset from the dropdown, and then click GO</p> <p>> The camera view will change to the preset.</p>	<p>To set a preset from the PTZ panel</p> <ol style="list-style-type: none"> 1. Select the preset from the dropdown, 2. Use the joystick controls to establish the camera view, zoom, focus and light (iris). 3. Click SET. 4. Go to this preset to check it.
<p>To relinquish manual control of the dome / PTZ camera from the PTZ panel</p> <p>Click Auto. > If your system runs remote tours automatically, or switches display based on events, these automated responses will take over.</p>	<p>Pause a PTZ Tour</p> <p>PTZ tours can be paused/restarted, per camera. This is achieved by right-clicking on the camera in the resource panel and selecting the "Pause/restart PTZ tours" option.</p>
<p>To lighten/darken the live camera view from the PTZ panel</p> <p>Watch the live camera as you press the iris+, or iris – button. You will see the image lighten or darken</p>	<p>To gain manual control of the dome / PTZ camera from the PTZ panel</p> <p>(This applies if you system runs remote tours automatically, or switches display based on events)</p> <p>Either click manual, or simply move the software joystick</p>

Individual Camera Panel Zoom Options

Note: If the camera supports any of the above then you can switch between digital and PTZ control using the icons on the bottom-left of the camera panel.



<p>Zoom In/Out</p> <p>Scroll the mouse wheel. Holding down the shift key while scrolling the mouse wheel will do an accelerated zoom</p>	<p>Zoom to Area</p> <p>Holding the shift key select an area using the left mouse button</p>
<p>Zoom out completely</p> <p>Press the Z key or; hold the left mouse-button down, for half a second, and select the zoom out menu option</p>	<p>Center on Point</p> <p>Holding the shift key press the left mouse button; or Hold the left mouse-button down, for half a second, and select the center on point menu option.</p>

• **Event Notifications**

If your administrator has set up **Event Notifications** for this unit then you will receive notifications based on these setups.



1 A Message Notification



2 A Popup Notification

1. An **audio notification**. This is a sound clip that gets played when the event triggers.
2. A **message notification**. This is a message that gets displayed in the notification area of the resource panel. It's meant as an unobtrusive feed of events (To show the notifications area, click the ⚡ icon at the bottom of the resource panel. This can be resized). If an event has camera resources associated with it then the notification can be double-clicked and the cameras will be shown in the camera view.
3. A **popup notification**. This is a popup message box that is shown when the event triggers.



Clicking on the database icon in the notifications pane, will open that camera in the cameras panel at the point, in the database, where the event occurred.



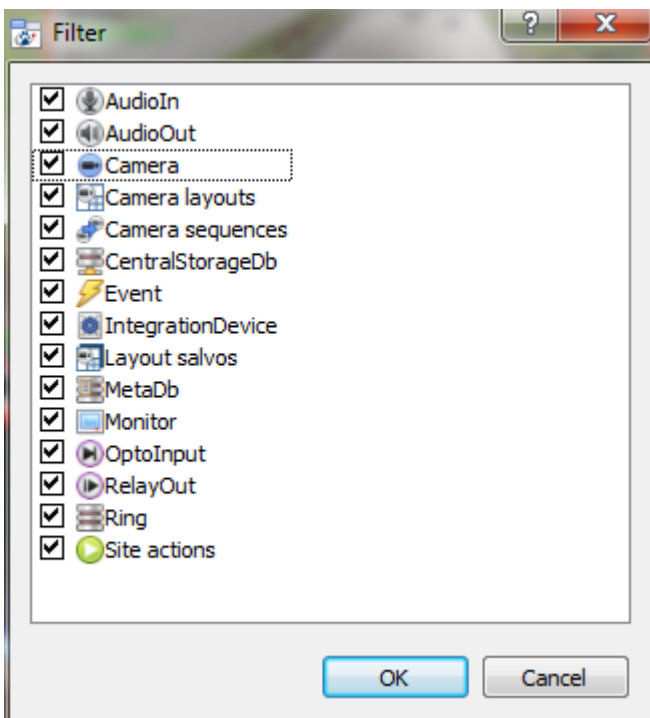
Clicking on the recycle icon will either clear the notification (if you click on the recycle icon attached to the notification); or clear all notifications (if you click on the one at the top of the Notifications pane).

• *Configure Resource Panel*

This section allows the administrator to setup the various resources that are pulled through into the resources panel. These include the Unit Resources, Camera Layouts, Camera Sequences, Layout Salvos, and Site Actions.

Note: Since this is part of the Site Configuration it has been dealt with in the full Setup Manual, for further information refer to this manual.

• *Resource Panel Filter*



Clicking on the resource filter icon will bring up the filter options.

The checked items ☒ will appear in the resources panel; the unchecked items ☐ will not appear.

This is useful in sites that have many resources that the user may want to filter when looking for something specific.

3 Archiving

Archiving is a facility to enable you to select recordings and copy them to archiving media, such as USB key, hard drive or CD/DVD. Unlike normal recordings, archived recordings retain their authenticity, and can be verified as authentic (unaltered) on replay, making them suitable for use in courts of law.

Creating an archive is done from within the Cameras tab; reviewing an archive, and exporting AVI from an archive, all occurs in the Archive tab, or the CatPlayer. This is why this section is separate to the Cameras Tab section.

a. Introduction

CathexisVision 2016 will see the introduction of a new Archive system that is in line with the timeline review and control systems introduced to the cameras tab in CathexisVision 2015.

Special Notes

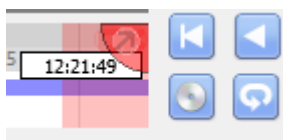
1. A NetBSD GUI will only be able to output legacy archive files.
2. A NetBSD GUI is unable to archive video from a Windows/Linux NVR
3. A Windows/Linux GUI can only output new archive files, but will be able to archive video from a VR running any OS.
4. When archiving a video stream which has **Privacy Zones**, the archive file will have the zones included only if the feed is set to "Show privacy zones" at the time of archiving.

b. Operation



The Archive 2 system has changed both the creation, and review, processes for archiving.

Archiving

- **Select Video to Archive**



There are two ways to select the period which you want to archive.

1. **Tagging:** Click on the  icon to tag the start of your selection. Then navigate to the end of your desired period, and click on the  icon, to tag the end of your selection.
2. **Shift-selection:** This is done by holding down the SHIFT key, while click-dragging your selection with the left mouse button. Your selection will look like the image to the left.

Click on the  icon to start archiving your selection.

- *Apply Archive Settings*

Archive Tab

Destination: Choose whether to archive video to Folder or straight to Optical disc. archiving to **Folder**, select your path and **Output type**.

The **filename** may be defined manually – the default name will be the current date.

Select a **Password** option from the dropdown menu; this password will have to be entered when reviewing archives.

Clicking on **Set description** will allow you to give this specific archive a title.

Click on **Start** to archive the selection with these settings.

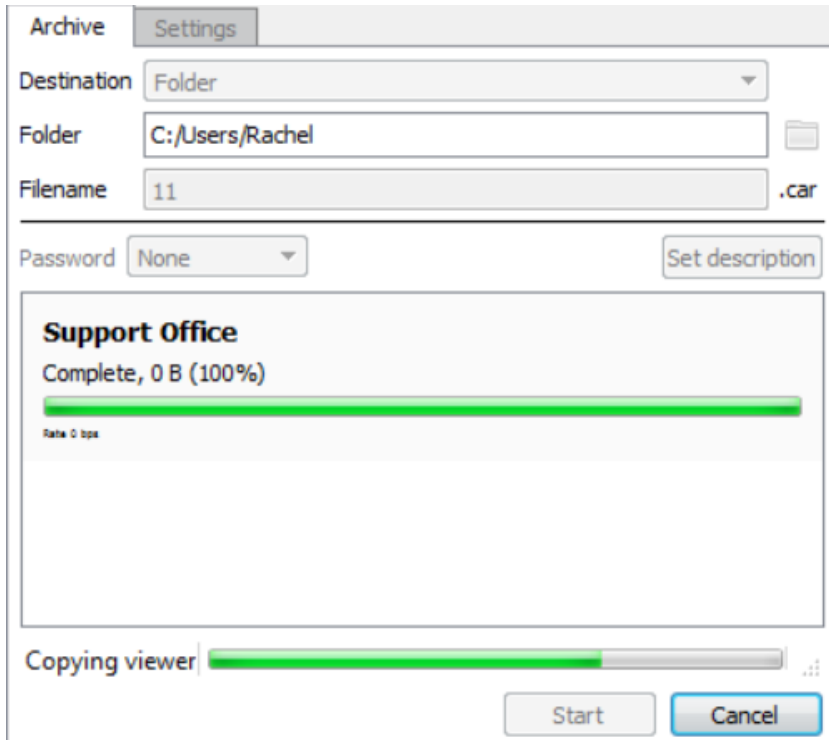
Settings Tab

You can make archives exportable or not exportable, by checking the box.

Use the **Copy archive viewer** option when the archive will be viewed on a computer that does not have the CathexisVision interface installed.

Note: The option to set up archive profiles, watermark profiles, and archive passwords, is configured in Setup Tab → General Site Setup → Configure archiving. This setting is controlled by the administrator of the Site.

- *Complete the Archive process*

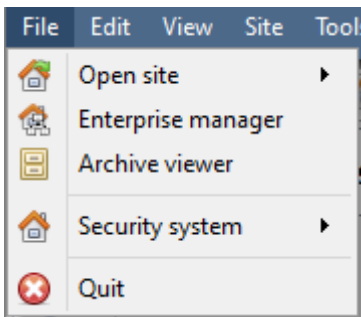


While archiving the interface will give you moving progress bars to indicate the progress of the archiving process.

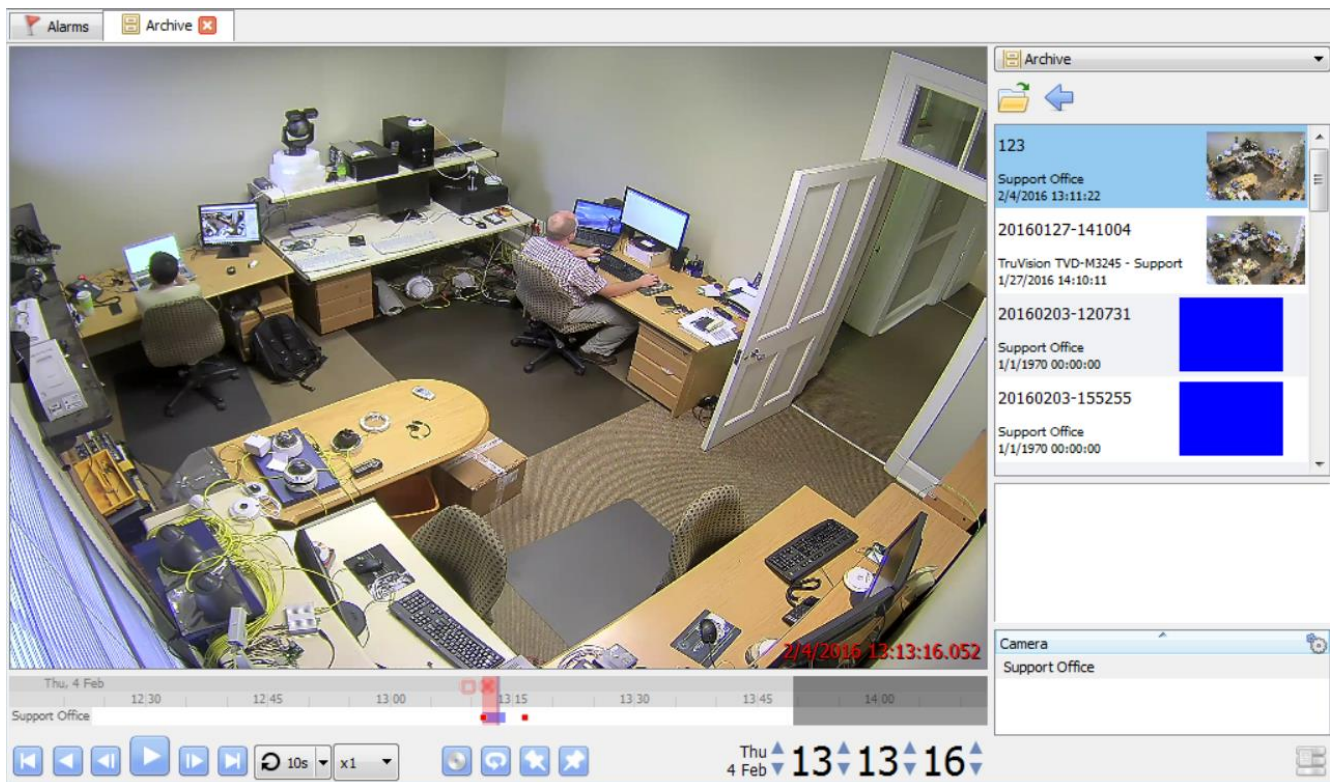
If you chose to copy the archive viewer in the previous step, you will see that copy progress here.

Reviewing Archives



- *Open the Archive Viewer.*



Open the CathexisVision GUI, and select **Archive viewer** from the **File Menu**.




- **Open an Archive Folder and Select an Archive to Review**

Once in the Archive viewer, you may navigate to and from archive folders using the   icons.

Once you have opened the folder, the list below the icons will be populated with the archives contained in that folder.

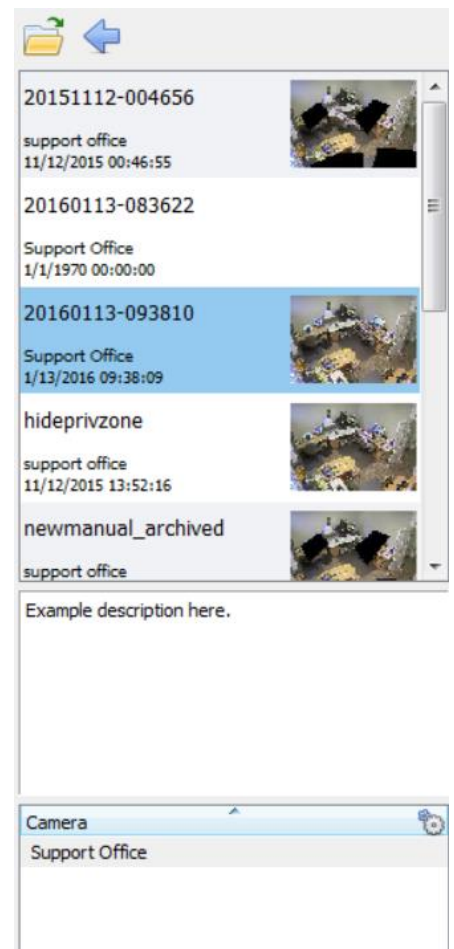
Select the archive you wish to view and it will be displayed in the camera image to the left of this panel.

If you set a **description** when archiving the video, it will appear in the white space below the archives.

When you select an archive to review, the recordings, listed by camera, will appear in the **Camera** box. Click on  to set Start and End time columns to this view.

If there is a password set on an archive, you will have to enter it:

Enter password



- *Exporting Snapshots from Archive Viewer*

When reviewing archived recordings, you have the option to export snapshots.

Right-click on the image and select **Export snapshot...**. This will bring up the **Export snapshot** window, which provides you with the following options:



Print snapshot.

Save snapshot to folder.

Copy to system clipboard.

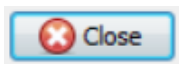
Copy to Cathexis clipboard.



This will overlay the name of the camera in the top-left corner of the camera image.

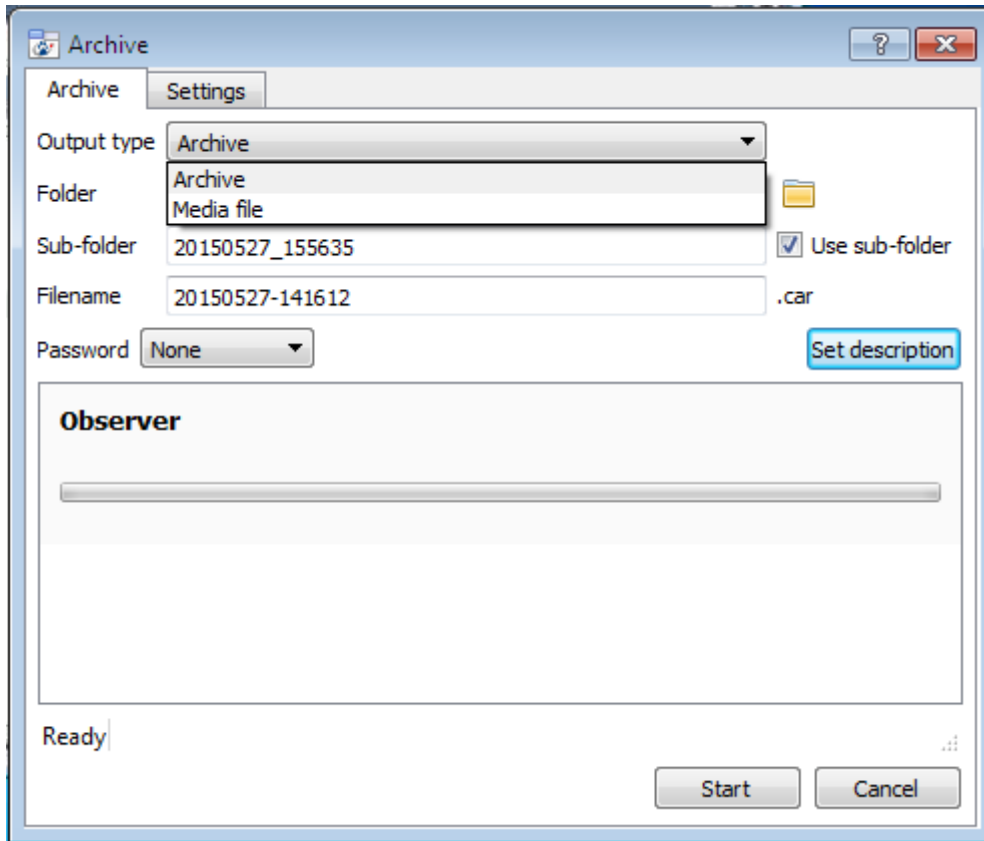


This will overlay the time of the recording in the bottom-right corner of the camera image.



Click once you have exported the snapshot as desired.

- *Export Archive*



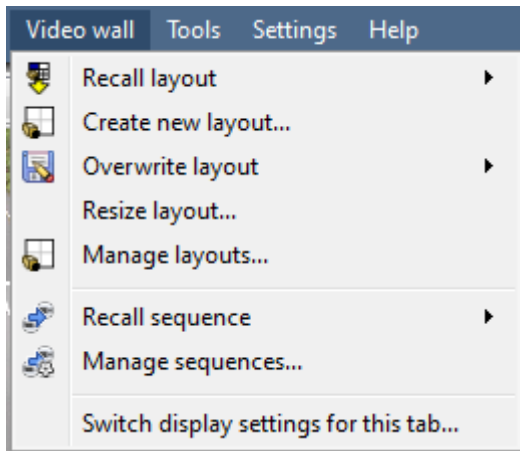
Depending on whether this option is enabled by the site administrator, you may export an archive, or selection of an archive, either as another archive, or as a media file.

To export the video as a media file, click on the dropdown menu for **Output Type**, and select **Media file**.

Note: If exporting as an archive file, password settings will apply when reviewing the export. If exporting as a media file, password settings will not apply and will be greyed out. Passwords are set/controlled according to archive profiles by the site administrator.

4 Layouts and Sequences (Video Wall Menu)

a. Video Wall



In pre-5403b software this menu was titled the Layout Menu, and only contained setup information for Layouts.

A **Layout** defines how the cameras appear on the screen, in the Cameras Tab. Including which cameras are shown, and how much space they take up on the screen.

A **Sequence** is a cycle of individual cameras that will run, on a timer, in a single viewing pane, in the Cameras Tab.

The **Switch Display Settings for this tab** will define the behaviour of the currently open Cameras Tab, when video information is sent to the Client Station with an alarm.

Note: this menu option will only be present when you are viewing a Cameras Tab.


Layout

A **Layout** defines how the cameras appear on the screen, in the Cameras Tab. Including which cameras are shown, and how much space they take up on the screen.


- **Create new Layout**

To create a layout, organise your cameras on the screen as you desire (double-left-click to expand; single-right-click to reduce). Then click on **Layouts** → **New**. Give the Layout a name, and click OK. (you can use Layouts created in the Cameras Tab in the Monitors Tab, and Visa Versa.)

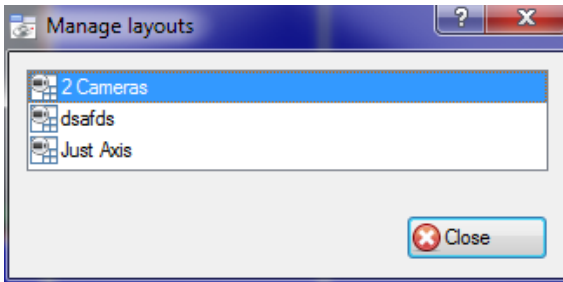
- **Recall a Layout**


To bring up a list of existing Layouts, click on  **Recall** and select the layout name that you desire.

- **Overwrite Layout**

Clicking on  **Overwrite**, and selecting on one of the Layouts in the list, will overwrite that Layout with the current panel organisation.

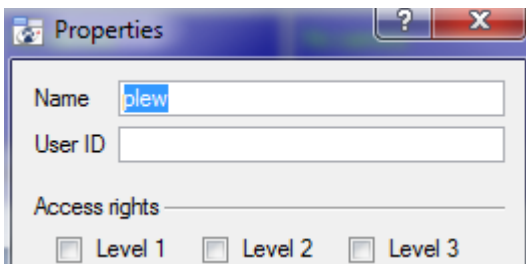
- **Manage Layouts**



Clicking on  **Manage** will bring up the list of existing Layouts for you to manage.

From the management list you may either delete the Layout or enter the **Layout Properties** window.

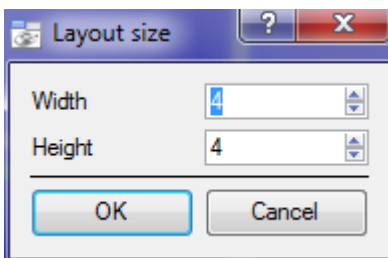
These are both done by right-clicking on the Layout in the list.



In the **Layout Properties** window you may change the Name, and User ID of the Layout, as well as the User Access Level required to view, or edit, the layout.

Note: if you have limited access rights, you won't be able to change these settings.

- **Resize Layout**



Clicking on **Resize layout...** will give you the ability to change how many cameras are arranged on the screen.

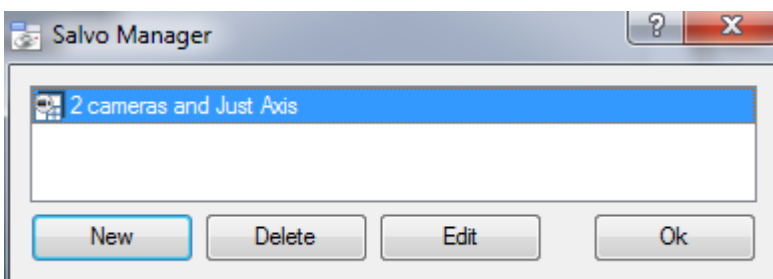
You may define how many cameras there are per row, and per column.


The maximum amount of cameras you may have per screen will be an 8*8 matrix. This gives you a possible 64 cameras per Layout. (This would require an incredibly large screen to be practical though.)

Sequence

A **Sequence** is a cycle of individual cameras that will run, on a timer, in a single viewing pane.

- **Sequence Manager**

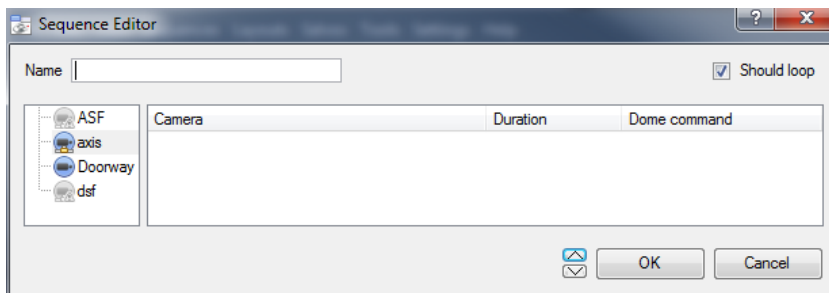


Clicking on the  icon will bring up the Sequence Manager.

To **edit** a Sequence, select the existing Sequence and click Edit. To create a **new** Sequence click on New. This will bring up the **Sequence Editor**.

- **Sequence Editor**

You may access the Sequence Editor, where you can create and edit sequences, via the Sequence Manager.



Name your Sequence appropriately.

The left hand panel will hold a list of available cameras.

The right hand panel will hold a list of cameras that are included in the Sequence.

Sequence Editor Procedures	
Add a camera to a Sequence	You may: -double-click on a camera in the list of available cameras. -Or click-drag one, or multiple cameras, across into the Sequence list.
Remove a camera	Right-click on the camera and select Delete.
Set the duration of a camera for each loop of the Sequence	-Right-click, and select Set Duration. -Enter the duration in seconds, and click OK.
Looping	If the <input checked="" type="checkbox"/> Should loop option is checked the Sequence will run indefinitely, if it is unchecked the Sequence will run once.
Change the order	Select a camera and use the arrows to move that camera up or down the order.

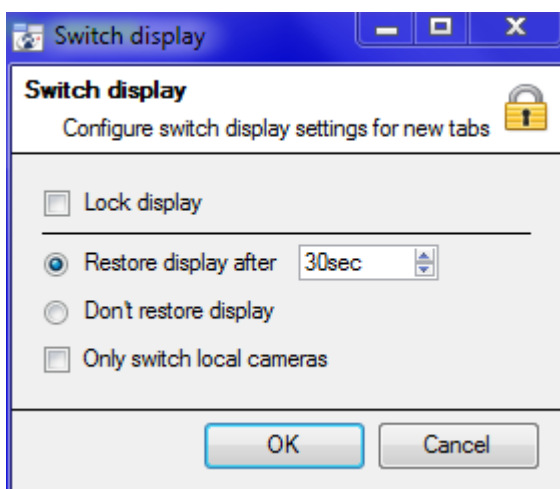
• Recall Sequence

To recall an existing sequence click on **Recall sequence** to bring up a list of all existing sequences. Click on the sequence you wish to run.

Switch Display Settings

This will define how your cameras tab responds when there is an event on the site that sends video and information to the Cameras Tab of the viewing client.

Note: The Switch Display Settings that you set here are for the currently open tab only



Lock Display

Will prevent the Cameras Tab from displaying any video feeds sent to it by the Event.

Restore display after



Will define how long after switching to the Event Cameras the Cameras Tab will return to the original display settings.

Don't restore display

Will leave the Cameras Tab on the Event Cameras until an operator, or administrator, resets the display.

Only Switch Local Cameras

Will only switch to Event cameras originating from a local site.

Note: you may also either lock , or unlock , the currently opened Cameras Tab by clicking on the little lock located at the end of the Timeline on the Review Controls.

5 Database Tab

a. Database Tab

Enterprise manager Security system

Resource ID Time Event

Security system (MASTER)

Impro IXP20

Paradox

Extra

Impro_DB

Inside_DB

Outside_DB

Road_DB

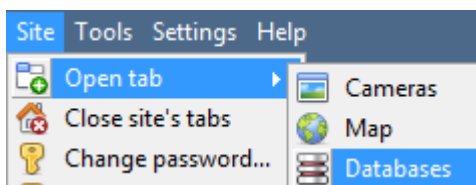
Databases

Database Entries

Selection Controls

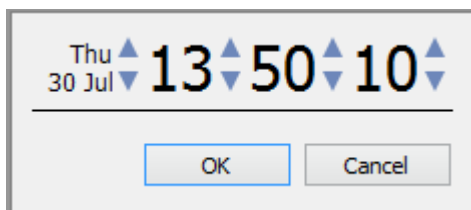
Hunt hLC-81BDPI - finance


Details of Selected Entry



To open the CathexisVision Database Tab select **Site—>Open Tab—>Databases**

b. Find an Entry



1. In the Database Tab, click on the  icon, located in the bottom right hand corner.
2. Select the date and time:

The list of database entries will have been pared down to beginning with the event closest to the time you selected, and a few subsequent entries.

c. Filter a Database to Locate Recordings (pre-2015, and Integration Databases).

Pre-2015 databases, and integration databases, will allow for filtering, when viewed from a CathexisVision 2016 client. There are three major filter types: **Filters**, **Field Constraints**, and **Time Constraints**.


Note: All filtering is based on AND/OR options.

- AND** If you apply Filter A AND Filter B, the result will contain only those Events in which both Filter A and Filter B are true.
- OR** If you apply Filter A OR Filter B, the result will contain any Event in which Filter A is true, plus any Event in which Filter B is true.

Note however that within a single filter you cannot use both functions – so you cannot apply “Filter A AND Filter B OR Filter C”. (It must either be all AND filters or all OR filters.)

- **Add/Remove a Filter**

Click on  to add a filter.




Click on  to remove a filter.




- **Enable a Filter**

☒ Filters ☒ Field constraints ☒ Time constraints In order to have any of the Filters active you need to check the relevant filter box at the bottom of the filters dialogue.

Note: you may further constrain results, by making **Filters** and **Field Constraints** AND/OR dependant. For example you may have a search that requires that the Event must match filters *or* field constraints, or you may have it set so that the Event must match filters *and* field constraints.

Filters Tab

<p>If event <u>has camera</u> <u>Camera n</u></p>	<p>These are the primary sorting lists. The blue underlined style indicates that they are options. Click to see a pop-up list of the options. You can choose from the following:</p> <p><u>Has camera</u> > (then choose camera from <u>Camera Name</u> dropdown list)</p> <p><u>Has audio</u> > (then choose audio input from <u>Audio Input Name</u> dropdown list)</p> <p><u>Is tagged</u></p>
<p><u>and</u></p>	<p>This is a logical parameter for multiple filters. It may be “<u>and</u>” or “<u>or</u>”. It only appears if you have more than one filter. By default it is “<u>and</u>”.</p> <div data-bbox="343 1496 1473 1794"> <p>The filter results must match <i>all</i> of the filters. For example, if we have</p> <p> If event <u>is tagged</u> <u>and</u></p> <p> If event <u>has camera</u> <u>Cat Tech Sliding (Zone 7&8)</u> <u>and</u></p> <p> If event <u>has audio</u> <u>Cat Tech Sliding (Zone 7&8)</u></p> <p>Then the result is only those Events that are Tagged, that also include Camera 5 content, and that also include Audio Input 3 content – probably a short list.</p> </div>

	<p>The filter results must match <i>any</i> of the filters. For example, if we have</p> <p> If event <u>has camera</u> <u>Cat Tech Sliding (Zone 7&8)</u> <u>or</u></p> <p> If event <u>is tagged</u> <u>or</u></p> <p> If event <u>has audio</u> <u>Cat Tech Sliding (Zone 7&8)</u></p> <p>Then the result is all events with Camera 5 content plus all Events that are tagged plus all events that have Audio Input 3 content – probably a long list.</p>
--	---

Field Constraints Tab

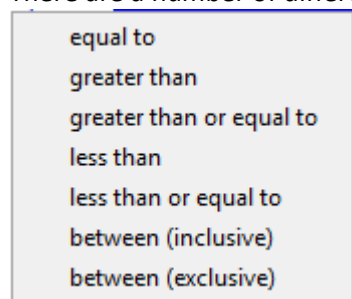
This tab is only visible if you have a streaming text data application installed, in which case you see these text data field filters. They include the fields that have been identified in the text data streaming setup. i.e. on this tab you will see the fields that you have customised for the text data application.

Examples of text data are the data streamed from till transactions (transaction number, purchase amount, time, number of purchased items, etc.), and data streamed from Access Control applications (name, time, employee number, etc.). This data is stored as different “fields”. It is possible to constrain filtered results based on various decisions with these fields.

The principle remains the same as the Filters tab, where you create a filter and then change its parameters using dropdown options (see above). The nature of these parameters depends entirely on your custom application.

Time Constraint Tab

There are a number of different ways to constrain the time these are:

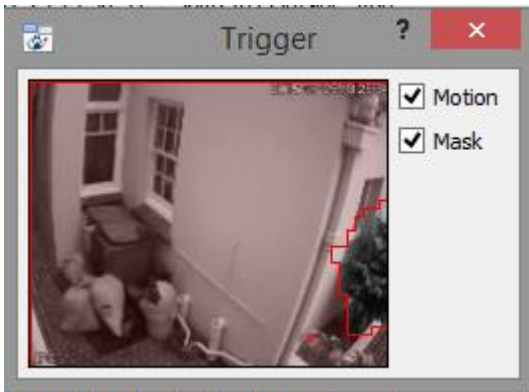



Note: to modify the times click on the Date/Time hyperlink and enter in your parameters in the dialogue that pops up.

d. Replay an Associated Recording

CathexisVision is capable of associating video footage and other data with database entries. When reviewing associated footage there are two options. The user may review the video clip associated, or they may view the video frame at the point that the event was triggered.

Review Trigger Frame




To review the trigger frame, left click on an entry, and if the  icon is present in the panel below, double-click on it. This will bring up the dialogue to the left.

Motion will show where the motion occurred in the image.

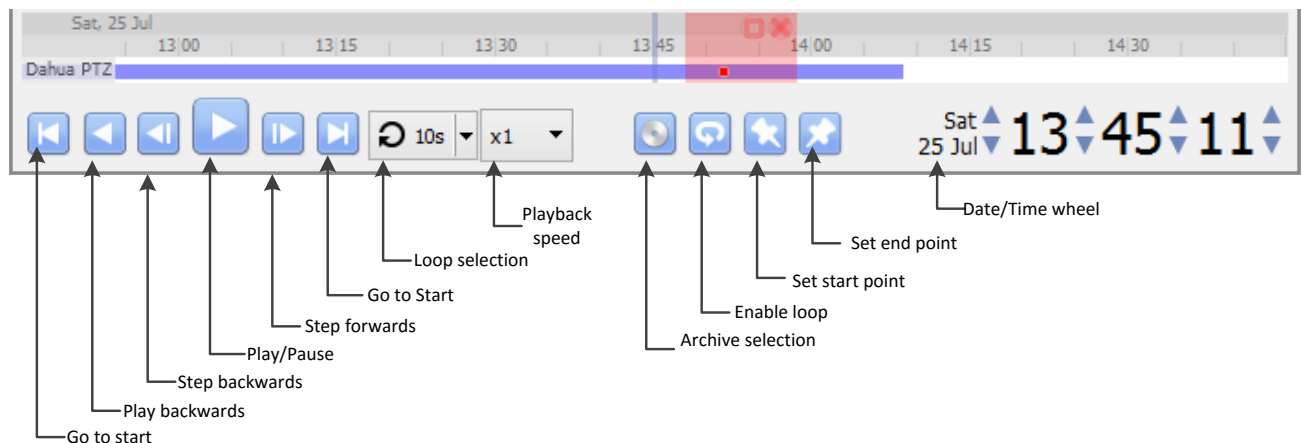
Mask will show what areas of the image are covered by the algorithm which triggered the database entry.

Review Event Video

To review the video associated with a database entry, either double click on that entry, or on the  icon in the entry's details.

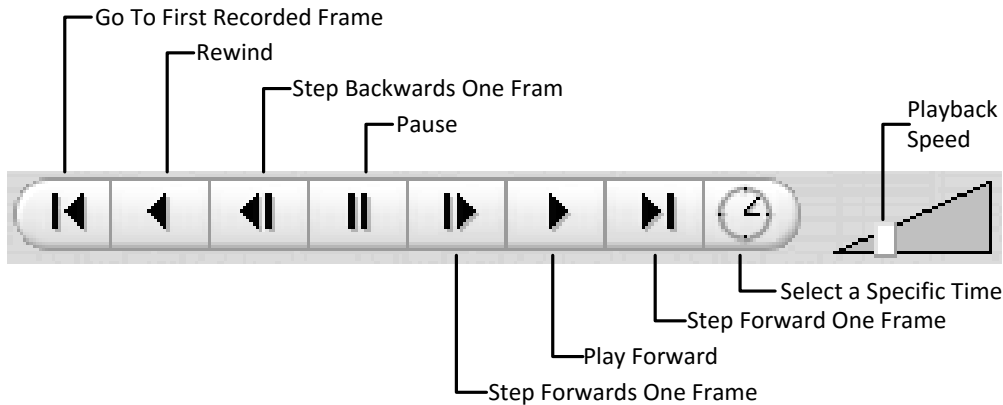
• *CathexisVision 2016 Controls*

CathexisVision 2016 database review uses the same control schema as the timeline review used in the **Cameras Tab—>Review Controls** section.



- **Pre-2015 Playback Controls**

When reviewing video from pre-CathexisVision 2015 sites the controls will be as follows:



e. Archive Selected Database Recordings

Archiving video from the database follows the same process described above, in the **Archiving** section of this document.

Note: When archiving a video feed that has **Privacy Zones** enabled the privacy zones will appear/not appear in the archived video, depending on whether they are enabled in the feed at the time of archiving. (They may be enabled/disabled by right-clicking on the feed of video being reviewed via the database tab.)

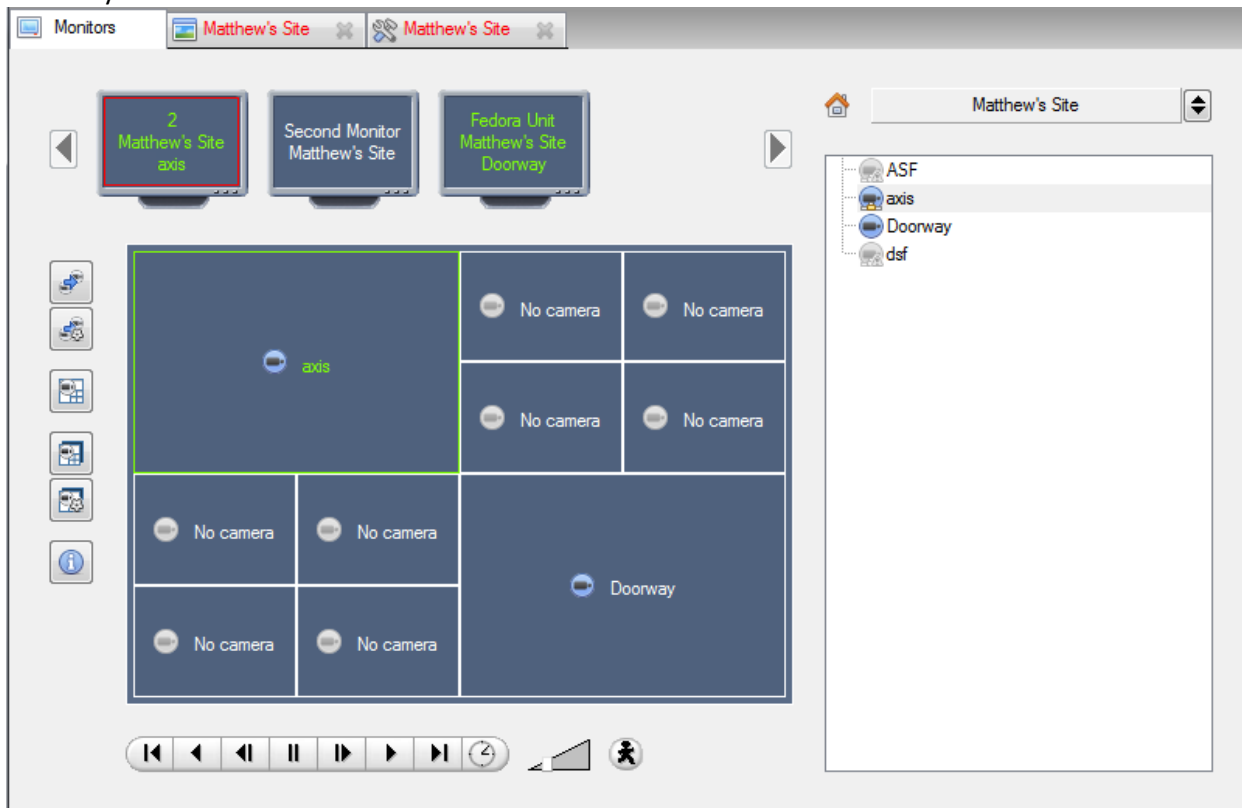
f. Print an Image from a Video Replay

To print a specific frame from video replay, you may middle-click anywhere on the on the image, and select **print**.

6 Monitors Tab

The monitors tab is a tab that gives you full control over the Video Wall. Here you can change the layout, and define camera Sequences, and salvos.

You will not see any video playing on the interface. You will see the names of cameras where they are placed in the layout.

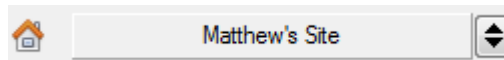


Open a Site on a Screen

The list of monitors that you see will be representative of the number of monitors that have been added to servers on the site.



To Open a monitor from a site, select one of the available Monitors. Then click the Sites list:




Then select your site.

The Monitor with a red border will be the Monitor whose camera Layout is displayed below it.

Layout

A layout defines how the cameras appear on the screen. This includes which cameras are present, to how much of the screen an individual camera takes up.


Recall a Layout

To bring up a particular layout on a screen, click on the  icon, and select the layout name that you desire. The Layout

Sequence

A Sequence will run a set of cameras, in single camera panel.


Run a Sequence - Click on a camera panel.

- Click on 
- Select the relevant Sequence from the drop down menu.

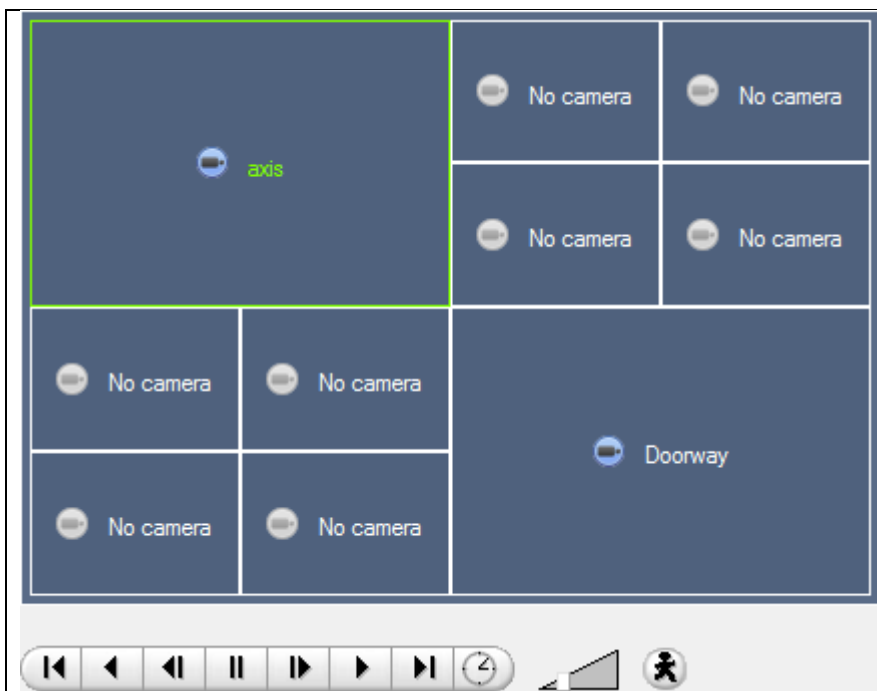
Salvo

A Salvo is a set of Layouts. This means that the Layout of cameras on the monitor will change, running through a set order, using the pre-defined Layouts.

Run a Salvo - Click on a Layout panel.

- Click on 
- Select the relevant Salvo from the drop down menu.

Virtual Cameras interface

	<p>The virtual cameras interface is the interface where you</p> <ul style="list-style-type: none">• See the Layout that the cameras will take on the Monitor that you have selected.• See what cameras are in which panels.• May control the overlays on each camera• And use the Playback controls to review video on the Monitor.
---	--

• *Individual Panel Settings*

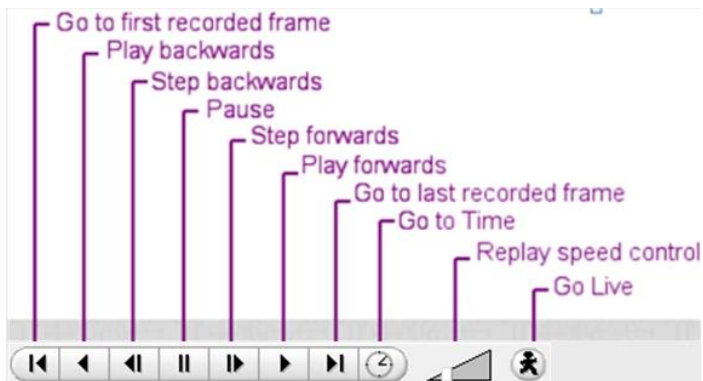
To change the settings of an individual panel middle-click on the panel, this will bring up the following menu:

Set no camera	Set No Camera will make this panel blank
Review camera	This will bring up the recordings of the selected camera. For information on reviewing the camera see the section below, on Review Controls

Next video format

This will cycle through the available video feeds that are available on the selected camera.

- **Review Controls**



Note: When a camera has been selected its border, and camera name, will become Green:



7 Audio procedures



A microphone and speaker on the menu bar (at the top right of the screen) represent your two local audio hardware resources, local audio input and local audio output.

These two icons represent the *state* of your local microphone and speaker - when a resource is being used, its icon is bright **green** in colour, and when the resource is inactive, and its icon is grey.

You can look at these icons to see the current state of audio interaction, and you can run your mouse cursor over a **green** icon for information on the activity. However, the actual control of audio is from icons in the Resource Panel and Live remote cameras:

- *To Listen to a Remote Site by Means of the Resource Panel*

Open the Resource panel for the remote site, and double-click the remote microphone that you wish to listen to. Your local speaker goes green, indicating that your listening is in progress. If you move the cursor over the speaker, you will see a tool-tip describing the remote audio input that is being listened to. You should hear sound from the remote site.

- *To Stop Listening to a Remote Site by Means of the Resource Panel*

Right click your local speaker, and choose **Stop**.

Your local speaker goes grey, indicating that your listening is no longer in progress.

- *To Listen to Remote Live MPEG by Means of the Middle-click Camera Menu*

A Live remote MPEG camera with audio will display a small microphone icon before the name on the camera display:

Middle-click the camera image, and select **Listen** from the menu.

You will see the icon change from grey to green, to indicate activity. You should also hear sound on your local speaker

- *To Stop Listening to Remote Live MPEG by Means of the Middle-click Camera Menu*

Middle-click the camera image, and select **Stop listening** from the menu.

You will see the icon change from green to grey, to indicate inactivity. Sound should stop on your local speaker

- *To Speak to a Remote Site*

Open the Resource panel for the remote site, and double-click the remote speaker that you wish to speak through.

Your local microphone goes green, indicating that your speaking is in progress.

- *To Stop Speaking to a Remote Site*

Right click your local microphone, and choose **Stop call**.


Your local microphone goes grey, indicating that your speaking is no longer in progress.

8 Other procedures

- ***To Switch a Relay Output (e.g. unlock a door, activate a siren)***

Relay outputs can also be switched from the Map (right-click>Set Output / Clear Output).

The action performed when double-clicking a relay in the CathexisVision resource panel is configurable. The setting is in CathexisVision menu->Settings->General

1.  Left double-click to toggle the relay between set and clear, **or**

Right-click the relay.

> A popup menu offers you the choice of Set output (activate it) or Pulse Output.


2. Select an option and click OK.

>The relay changes state, and the output changes colour . While active the play/pause image in the middle of the Output icon will change from black to white.

3. To clear a set relay, left double-click or right-click >Clear output

- ***To Pulse a Relay Output (e.g. unlock a door for a defined 4-second period)***

Relay outputs can also be pulsed from the Map (right-click>Pulse Output).

1.  Right-click the output and select **Pulse output**.

> This pulses the output *for the time that has been set at the unit*. While the output is pulsed the play/pause image in the middle of the Output icon will change from black to white, when it resets it will return to black.

- ***To Manually Trigger a Site Action***



Right-click the Site Action in the Resources Pane and then click Execute.

Note: This requires 1) Site action setup 2) Assignment of site action to resources pane 3) Appropriate access rights.